

# Technology comparison

Improvement	Current Installer	Install Manager
<b>UI, Look and Feel</b>		
Combine the multiple components of install into one wizard		✓
Improve UI		✓
One continuous progress bar		✓
<b>Improved Workflow, Content and IPH</b>		
Update Messaging and dialogs	✓	✓
Instill confidence, convey ease of use, and improve success for new users	✓	✓
Typical vs. Custom	✓	✓
Add help, hyperlinks, illustrations, and ghost text, to assist and set expectations		✓
<b>Self Healing/Smart Installer</b>		
Improve error messaging		✓
Detect and install based on prior configurations		✓
Install Logs (Statistics)		✓
Automate Networking Tasks		✓
<b>RTB Tasks</b>		
Reduce time and complexity of adding new components and features that require the installer		✓
Manage Patches w/Install Manager		✓
Improve Content Delivery		✓

---

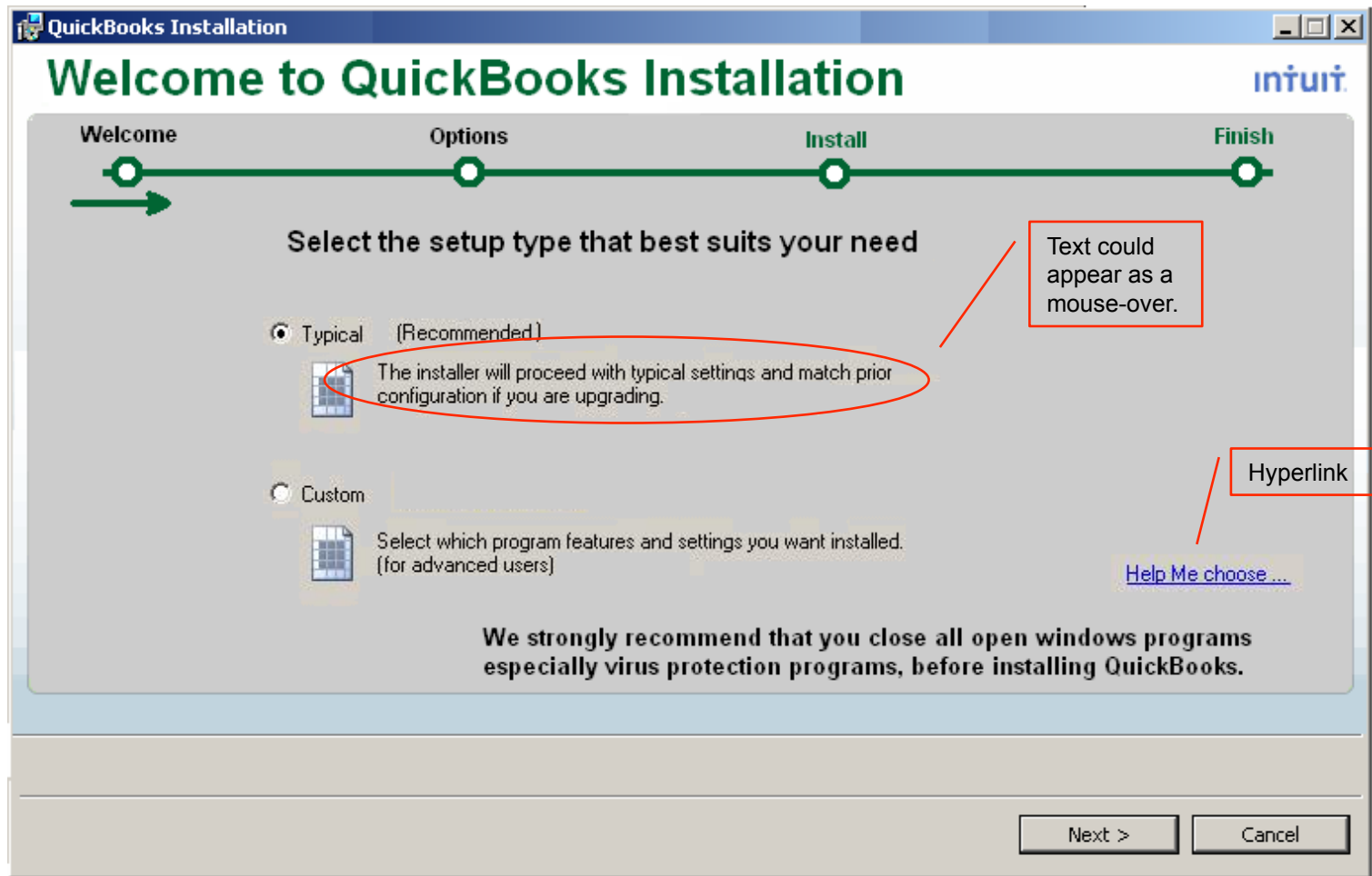
The following screens display the “Typical” install workflow

## **MOCKUPS – TYPICAL PATH**

# Welcome - Typical

Next goes to EULA.

Cancel exists the install after confirmation by user.

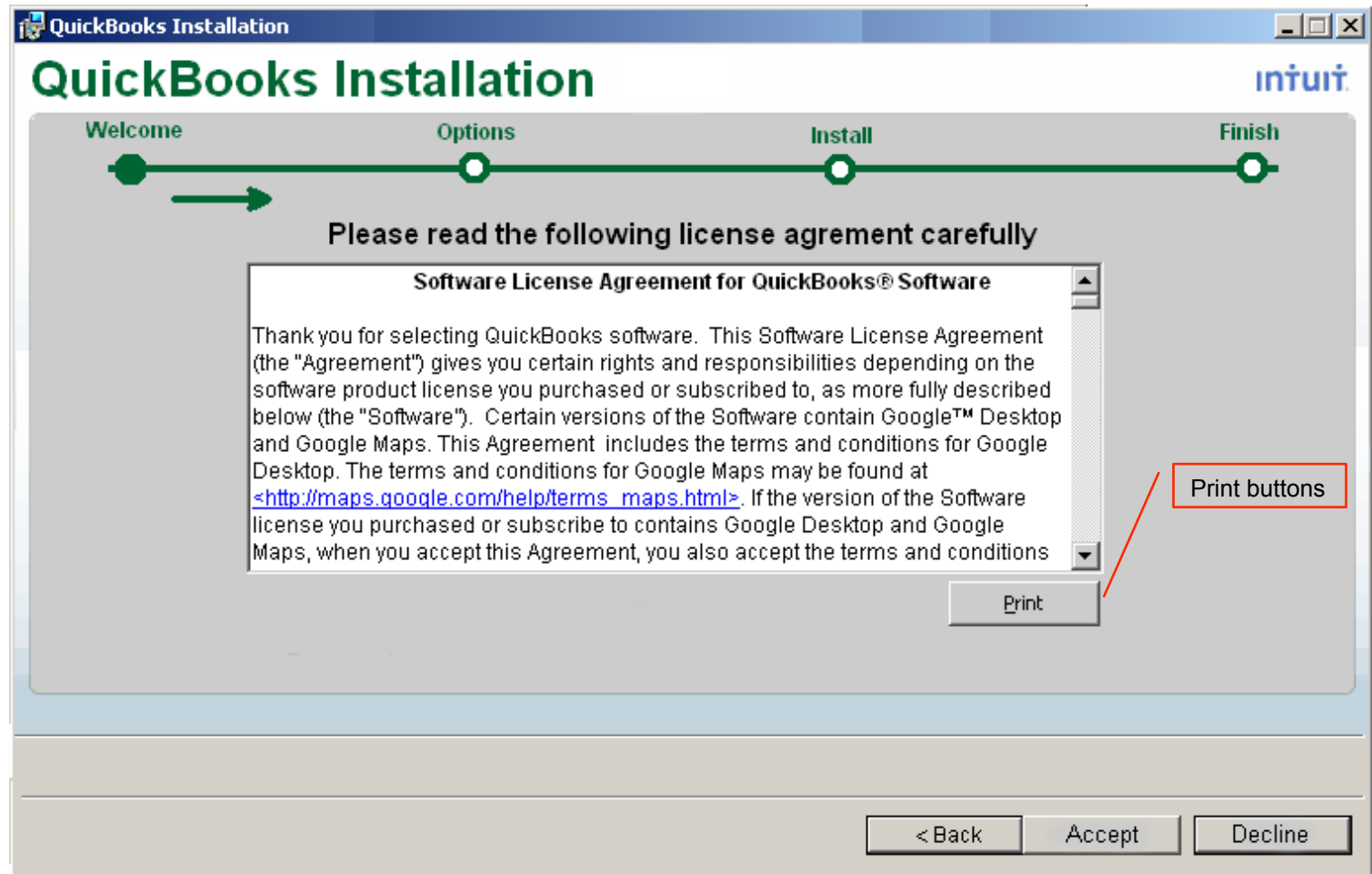


# EULA - Typical

**Back** goes to the previous screen.

**Accept**, accepts the EULA and goes to **License Number** for all flavors other than free and trial that go directly to the **Summary** page.

**Decline** exists the install.

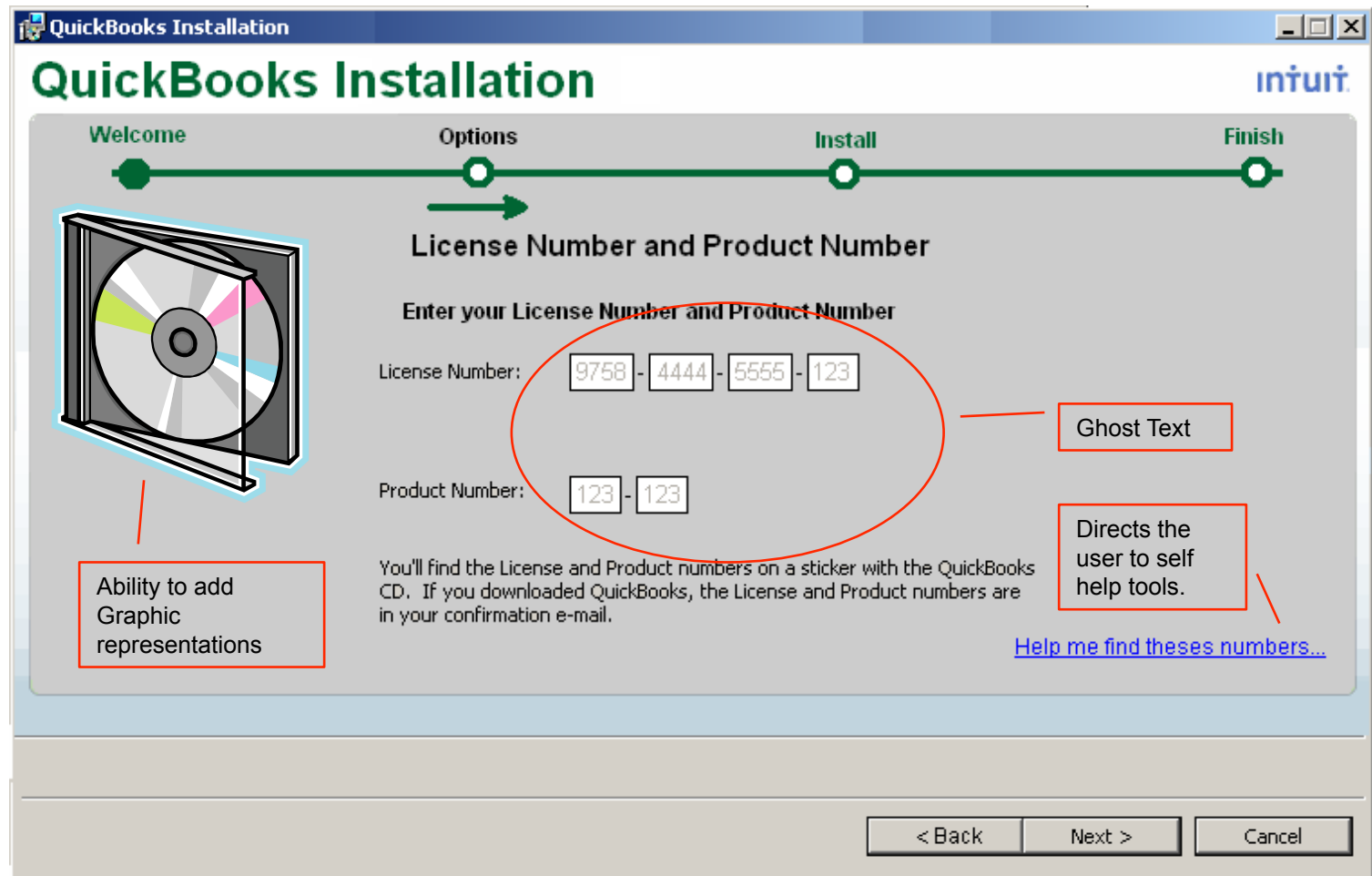


# License Number - Typical

**Back** goes to the previous screen.

**Next** goes to **Optional Components** if the License and product number are valid.

**Cancel** exists install after confirmation by user.



Ability to add Graphic representations

Ghost Text

Directs the user to self help tools.

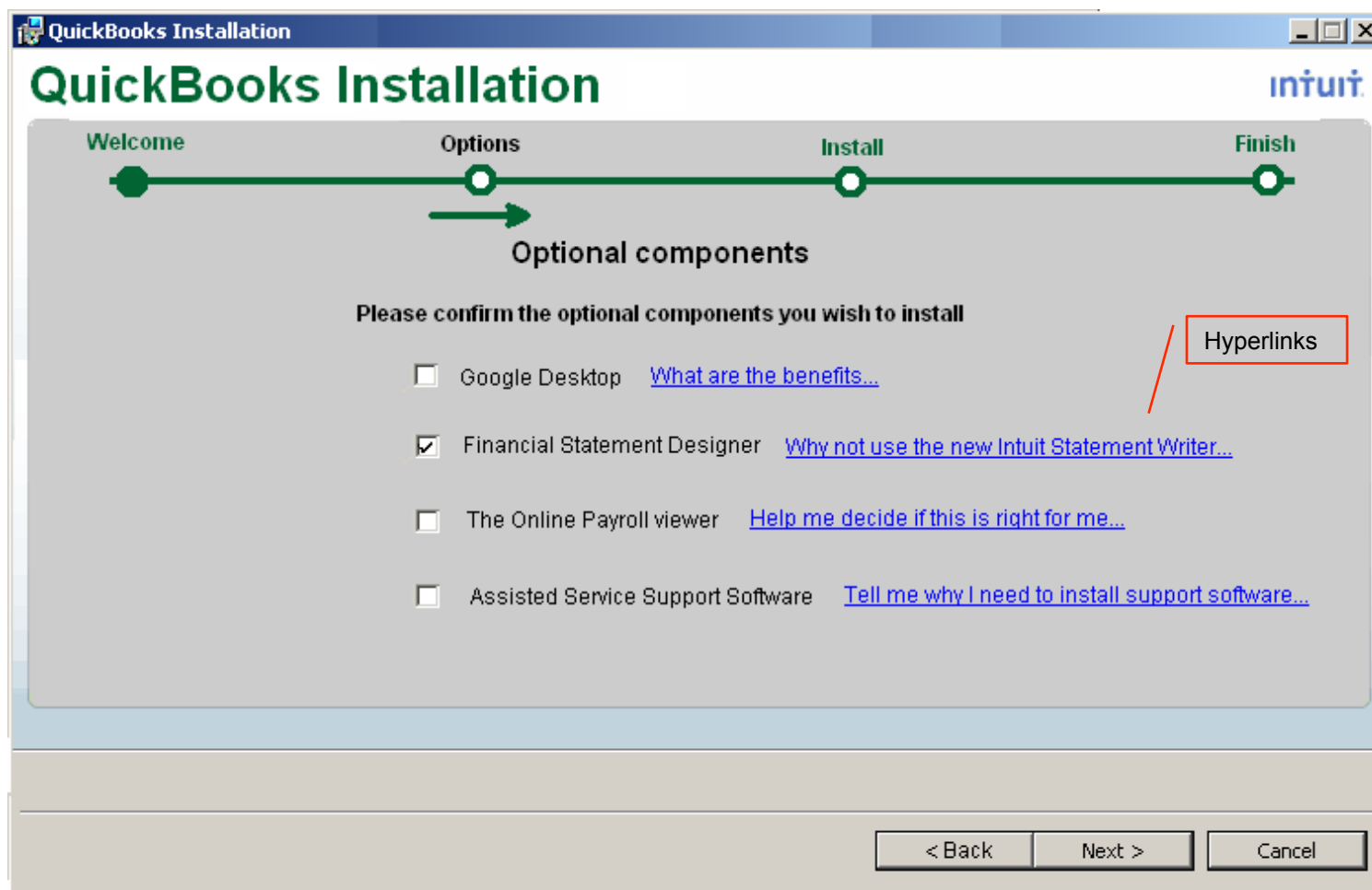
[Help me find these numbers...](#)

# Optional Components - Typical

**Back** goes to the previous screen.

**Next** goes to the **Summary**.

**Cancel** exists install after confirmation by user.



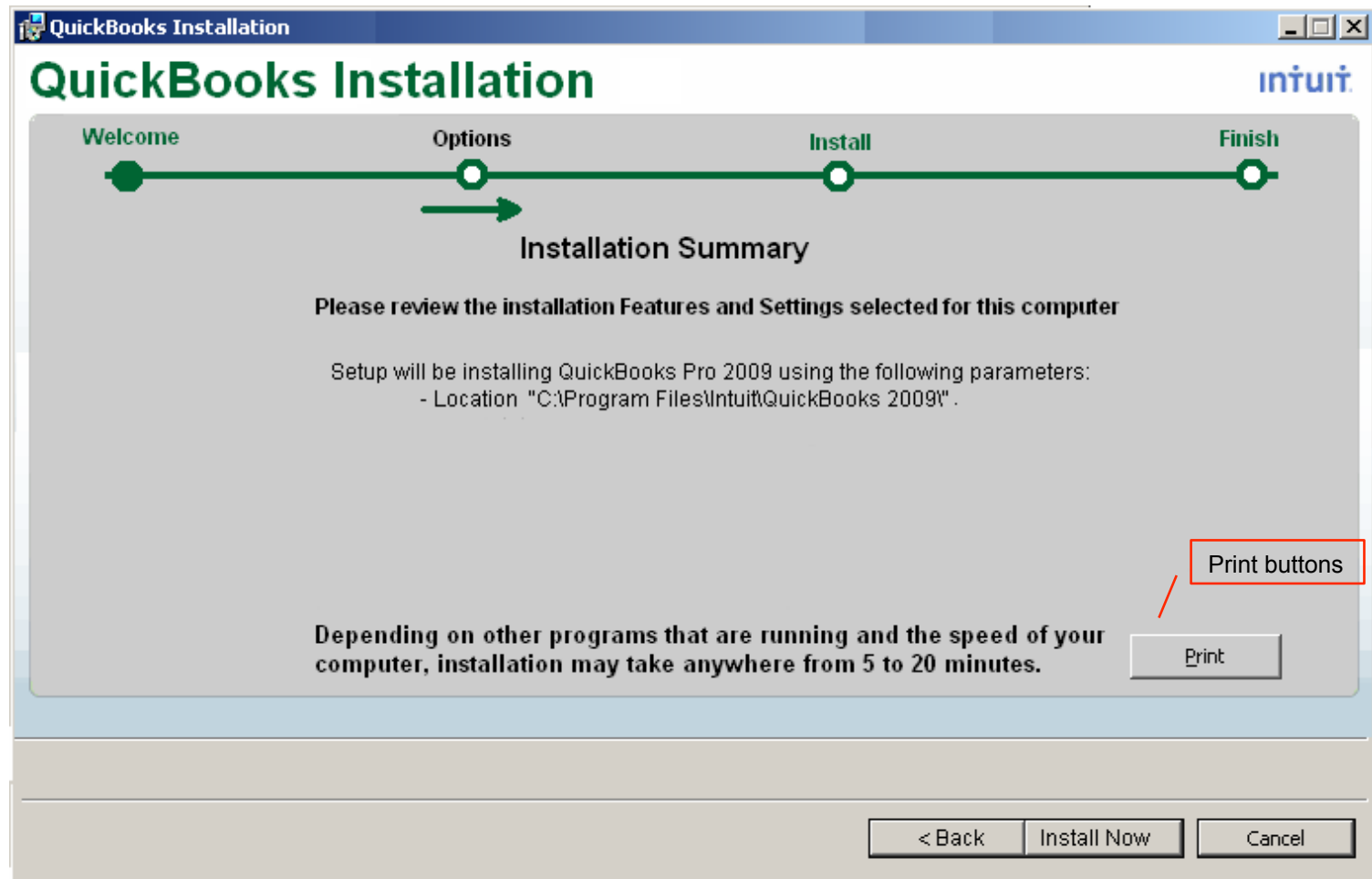
**Note:** This screen may not be necessary depending on what contracts state (Google) and the applications we decide to add by default.

# Summary - Typical

**Back** goes to the previous screen.

**Next** goes to the **Installing**.

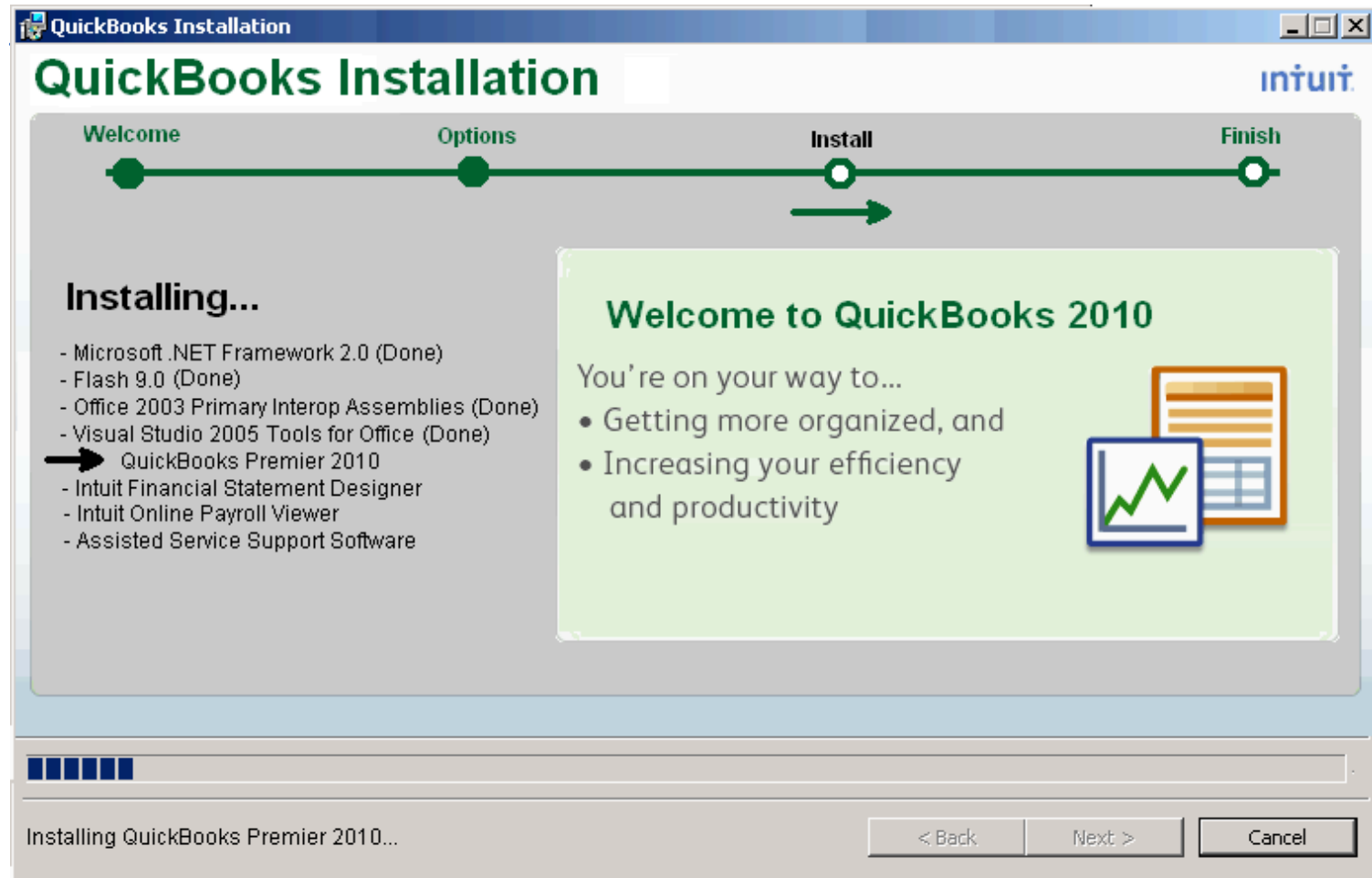
**Cancel** exists install after confirmation by user.



**Note:** This screen could be removed altogether if deemed not necessary. The summary could show additional or different information.

# Installing - Typical

**Cancel** rolls back the installation and exists install after confirmation by user.



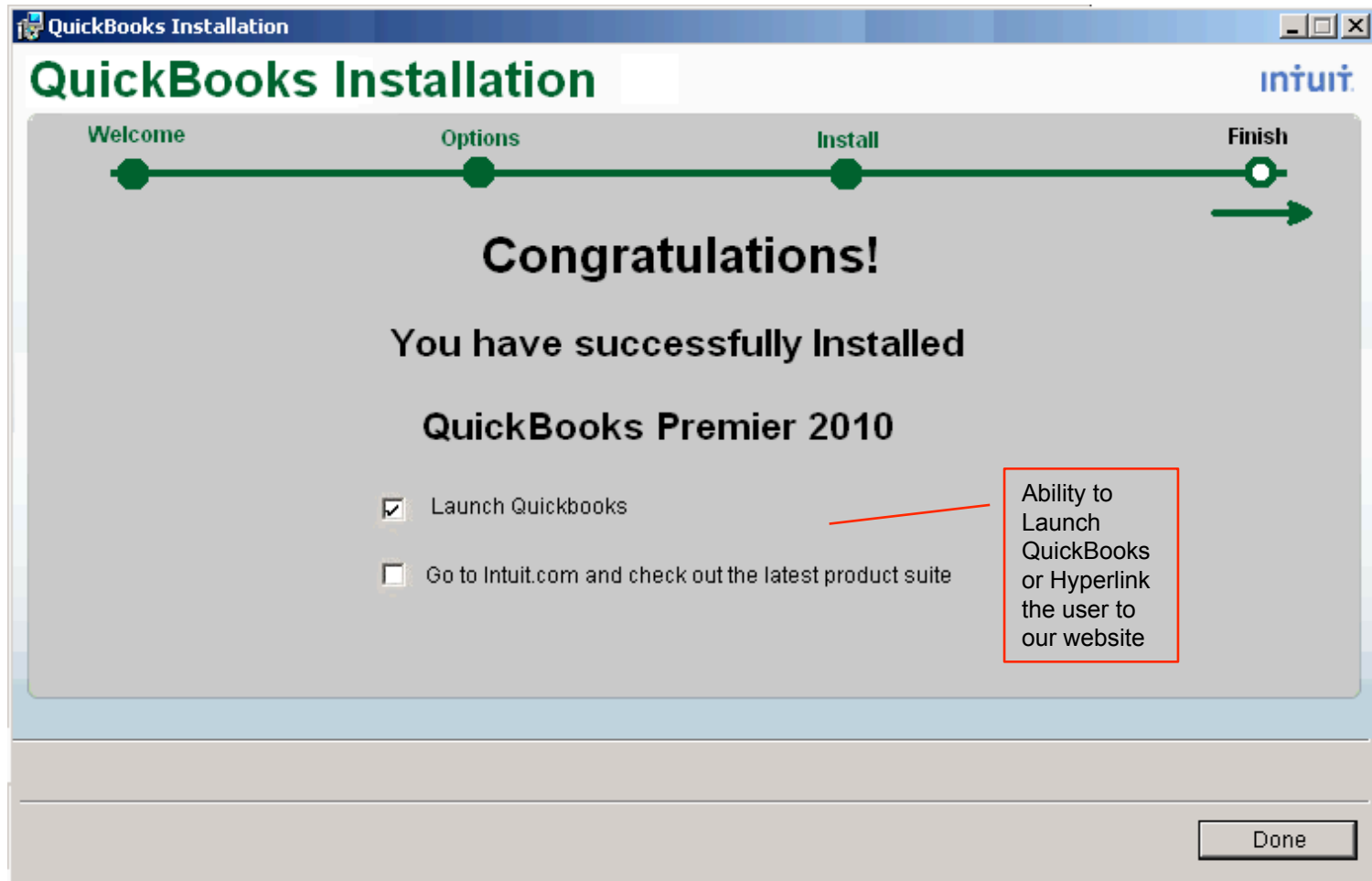
**Note:** What is actually displayed here can differ. Instead of a list of components being installed and a progress bar, there could be just one progress bar stating what is being installed. Or two progress bars; 1 for overall progress and 1 for incremental components.



# Congratulations - Typical

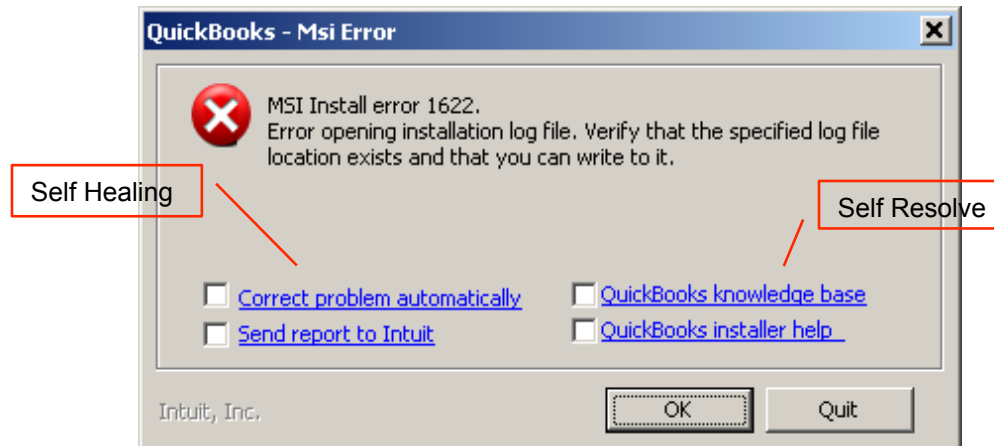
Done exits the installation and launches QuickBooks

Go to Intuit.com launches default browser to intuit.com.



# Error Installing - Typical

---



Above is an example of what can be done with error messaging.

V1 may include some of these options, like:

- Ability to send reports to Intuit
- Hyperlinks to KB articles related to the specific error
- Links to communities
- Updated verbiage

---

The following screens display the “Custom” install workflow

## **MOCKUP – CUSTOM PATH**

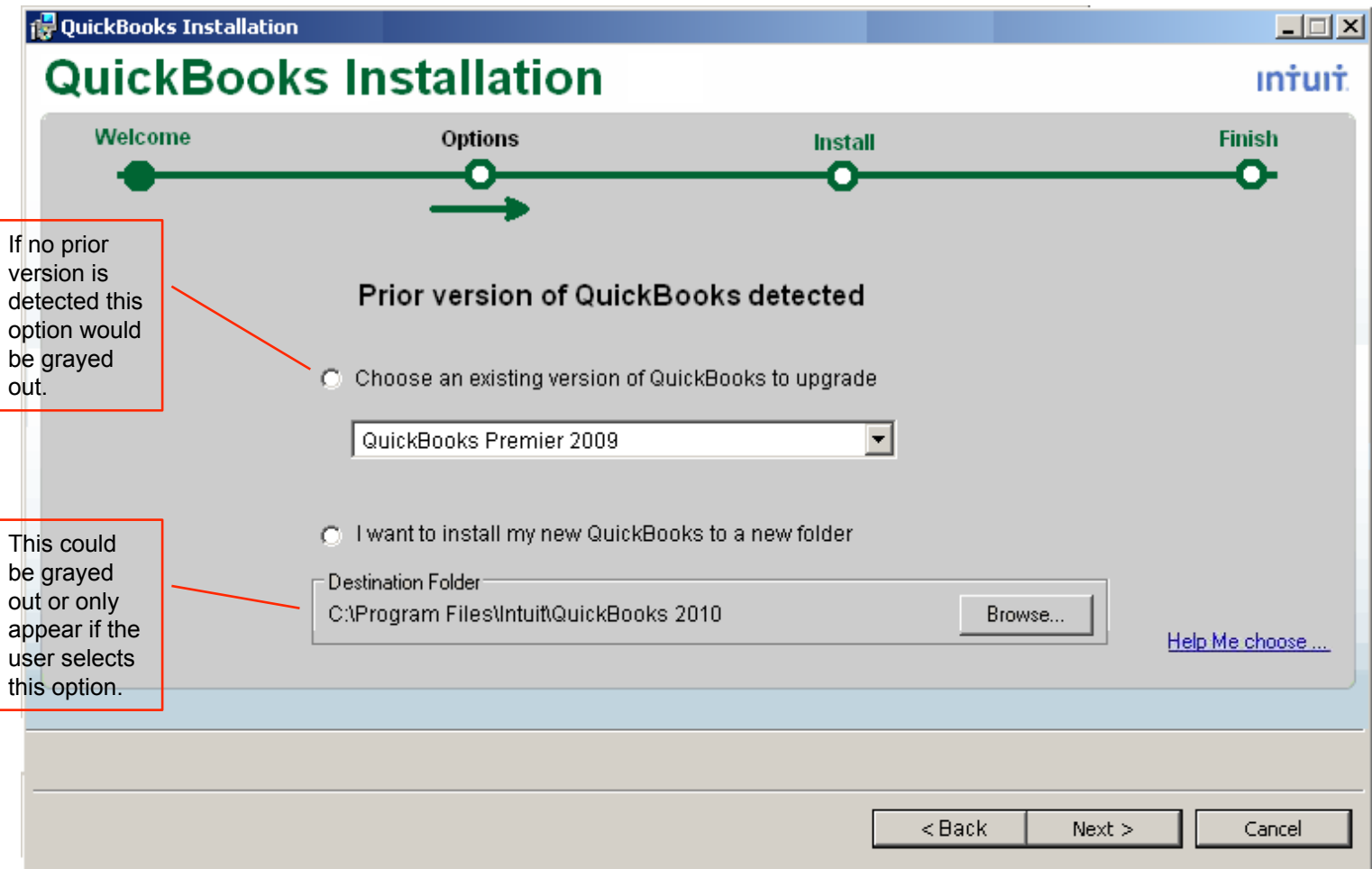
# Prior Installation - Custom

Back goes to the previous screen.

Next goes to **License Number** if Multi-User settings are detected.

**OR**

Next goes to **Multi-User** choices if prior versions and settings are **NOT** detected

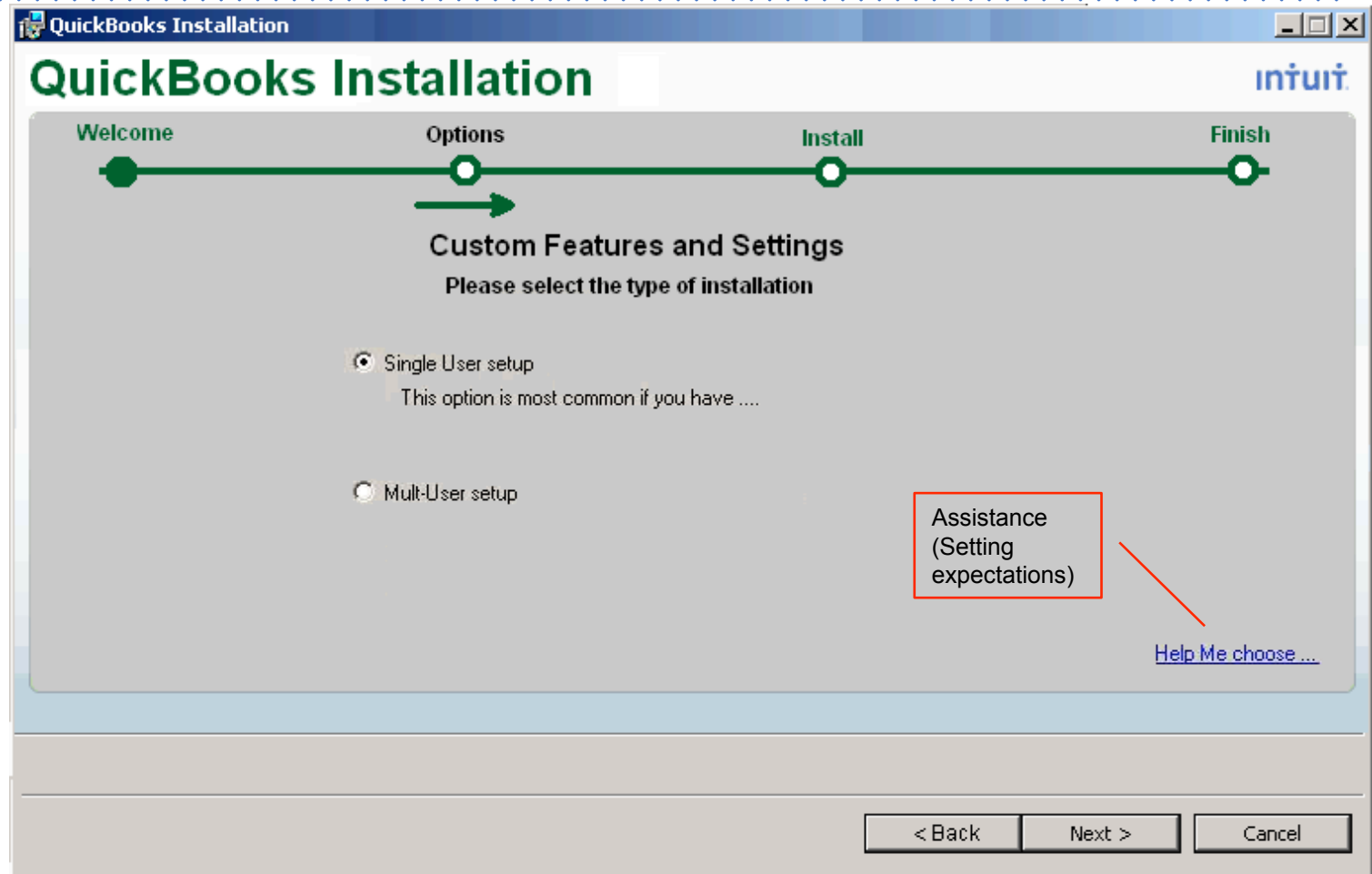


# Single User Selected - Custom

**Back** goes to the previous screen.

**Next** goes to **License Number** if Single User setup is selected.

**Cancel** exists install after confirmation by user.



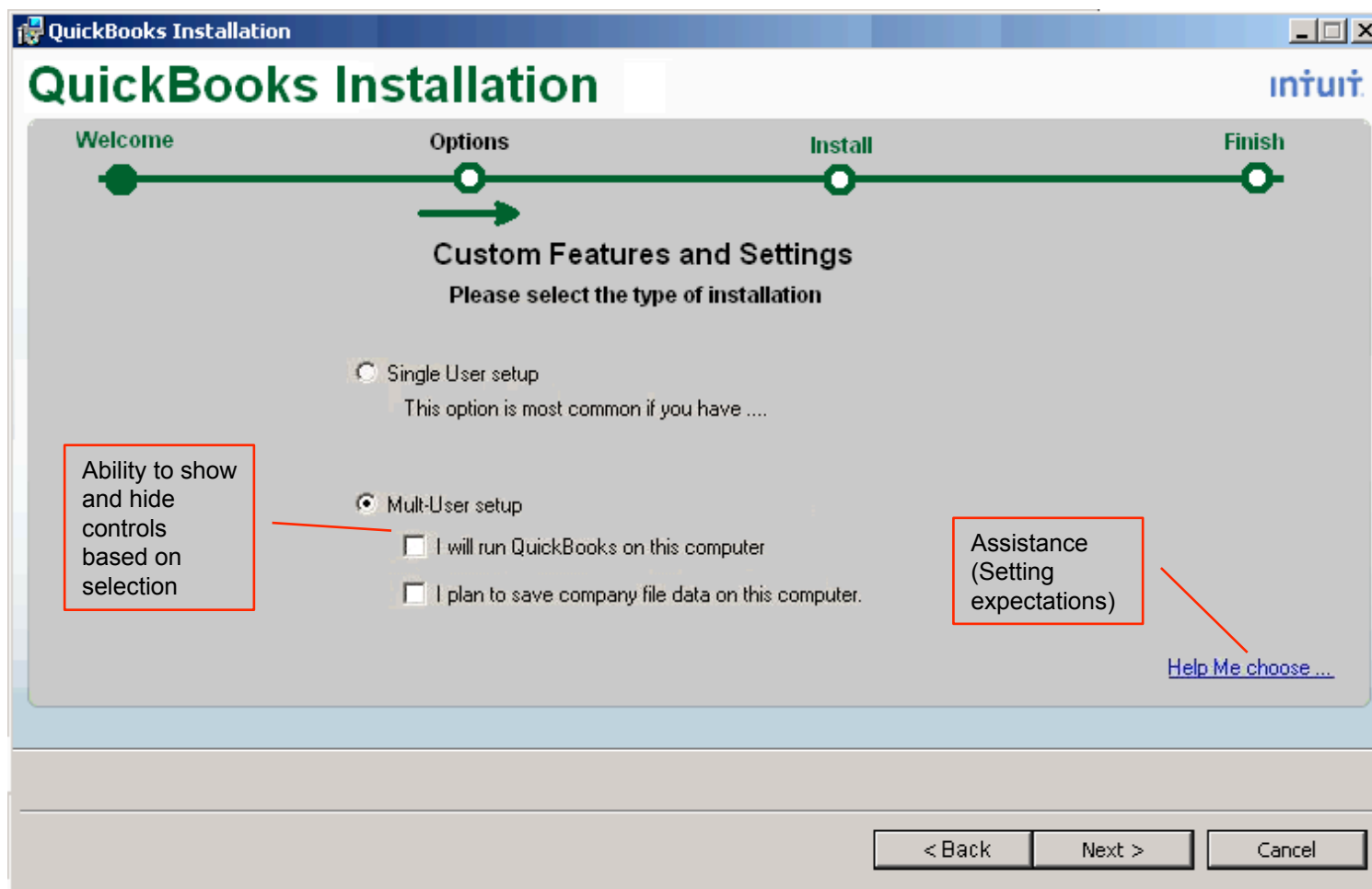
# Multi-User Selected - Custom

**Back** goes to the previous screen.

**Next** goes to **Summary** if I will run QuickBooks on this computer is NOT selected (Server only setup).

**Next** goes to **License Number** if I will run QuickBooks on this computer is selected.

**Cancel** exists install after confirmation by user.



**Note:** This screen reduces 3 screens, found in today's install down to one. The "Server Only" scenario can be handled differently so that it is **NOT** the default, considering this is not the norm.

# License Number - Custom

**Back** goes to the previous screen.

**Next** goes to **Optional Components** if the License and product number are valid.

**Cancel** exists install after confirmation by user.

QuickBooks Installation

QuickBooks Installation intuit.

Welcome Options Install Finish

License Number and Product Number

Enter your License Number and Product Number

License Number: 9758 - 4444 - 5555 - 123

Product Number: 123 - 123

You'll find the License and Product numbers on a sticker with the QuickBooks CD. If you downloaded QuickBooks, the License and Product numbers are in your confirmation e-mail.

[Help me find these numbers...](#)

Ghost Text

Directs the user to self help tools.

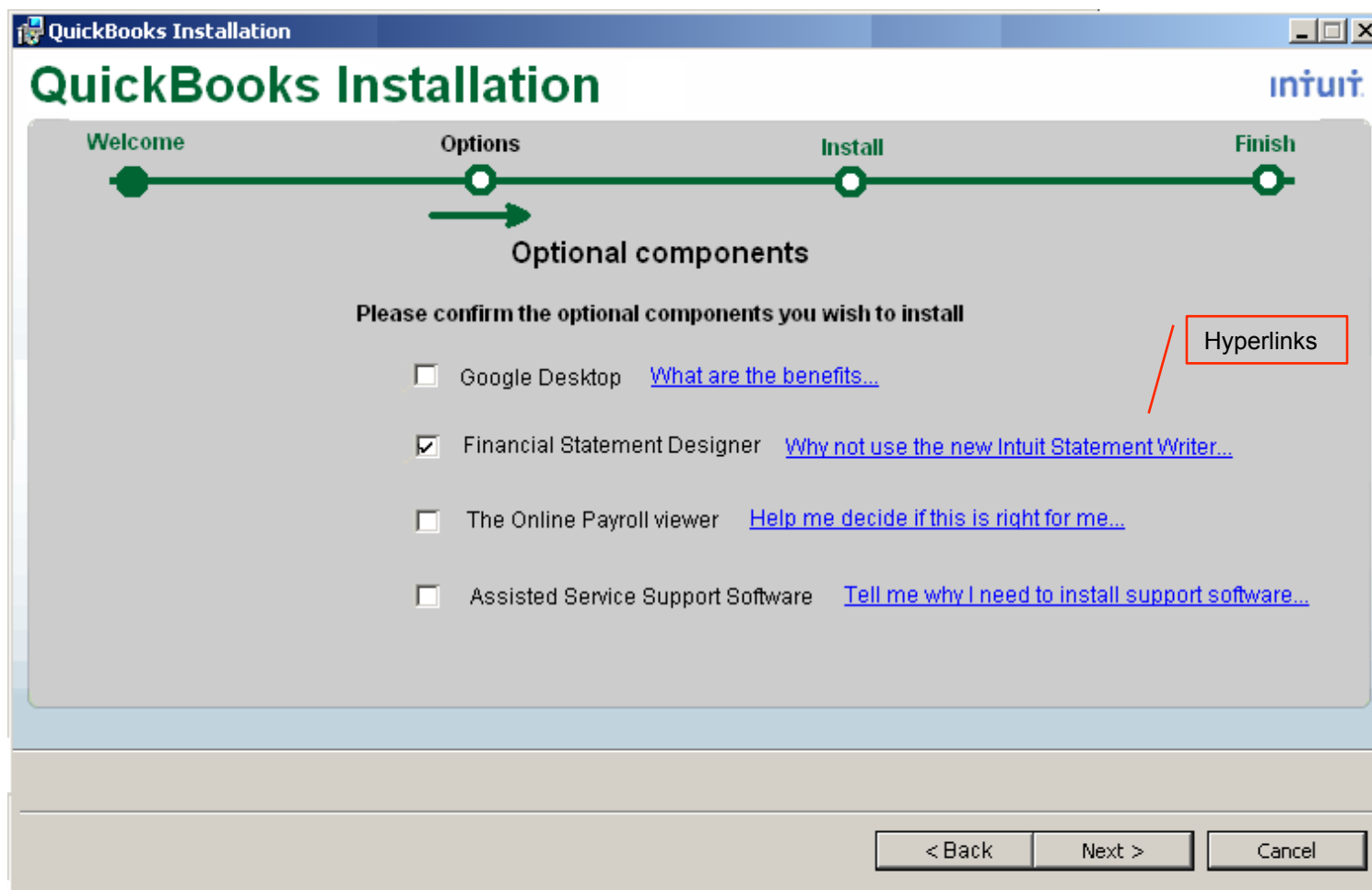
< Back Next > Cancel

# Optional Components - Custom

**Back** goes to the previous screen.

**Next** goes to the **Summary**.

**Cancel** exists install after confirmation by user.



**Note:** This screen may not be necessary depending on what contracts state (Google) and the applications we decide to add by default.

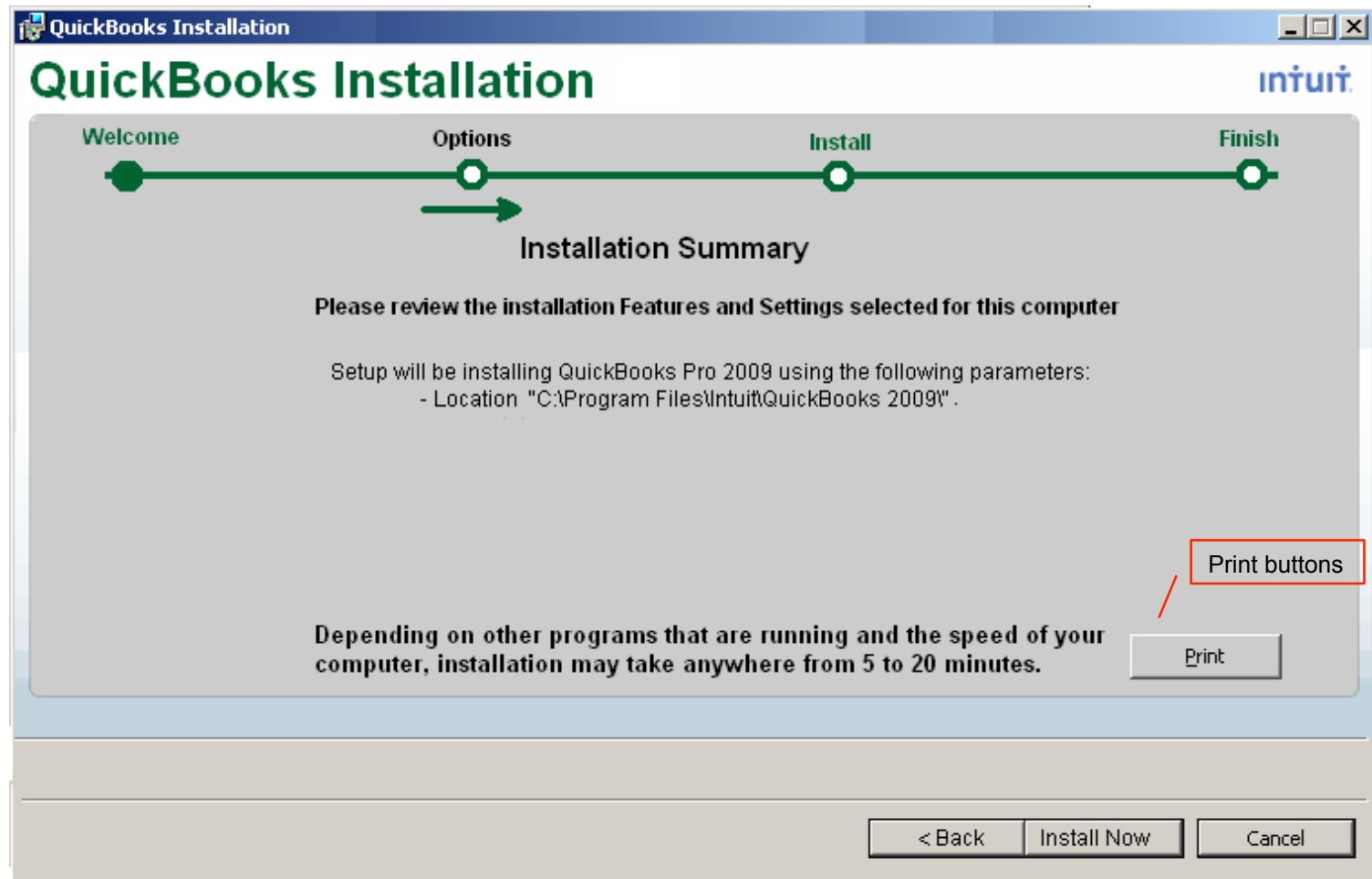


# Summary - Custom

**Back** goes to the previous screen.

**Next** goes to the **Installing**.

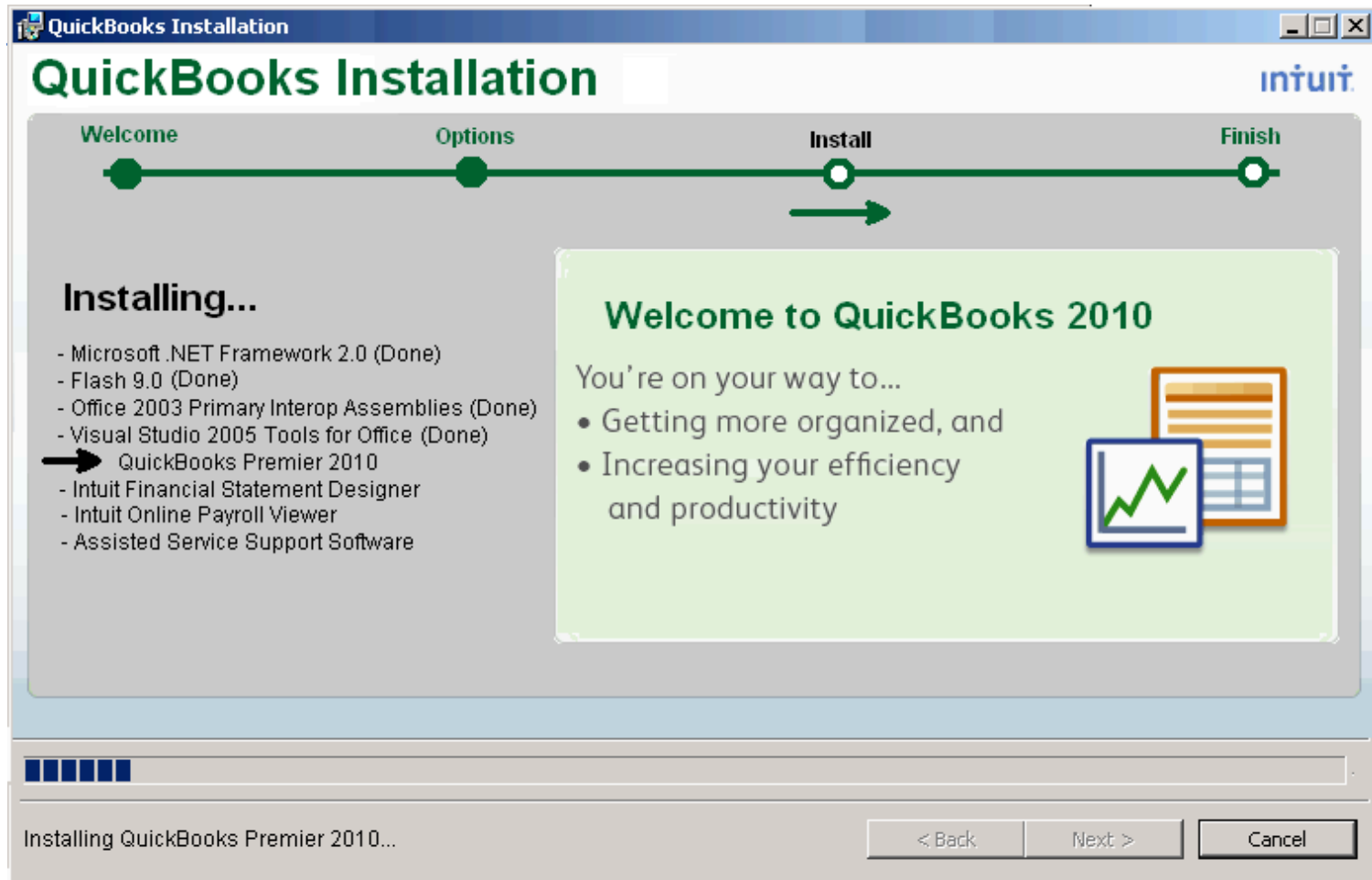
**Cancel** exists install after confirmation by user.



**Note:** This screen could be removed altogether if deemed not necessary. The summary could show additional or different information.

# Installing – Custom

**Cancel** rolls back the installation and exists install after confirmation by user.



**Note:** What is actually displayed here can differ. Instead of a list of components being installed and a progress bar, there could be just one progress bar stating what is being installed. Or two progress bars; 1 for overall progress and 1 for incremental components.

# Congratulations - Custom

Done exits the installation and launches QuickBooks

Go to Intuit.com launches default browser to intuit.com.

